

NEW

Traffic Monitoring... Unleashed!



BLACK CAT II PLUS

Next Generation Radar Recorder

- Portable Radar Traffic Data Recorder
- Easy Setup and Installation
- Data for Volume, Speed, Length & Gap
- No Recurring Supply Costs
- Keeps Personnel Off Road
- Records Bidirectional Data
- Records Two Lanes, Same Direction



JAMAR
Technologies, Inc.

Making Data Collection Easier

Black Cat II Plus Radar – Simple to Install, Accurate Traffic Data

The Black Cat II Plus Radar makes the collection of accurate traffic data an easy process. Simply mount it to any convenient location and aim it toward the road – the Black Cat II Plus Radar will accurately record volume, length, speed and gap for up to two lanes of traffic data without your personnel ever having to go into the road.

• Quick and Easy Installation – No Tubes or Loops Required

There are no road tubes or loops required with this device - simply mount the unit at a convenient location, aim it at the road and you'll begin collecting highly accurate data in a matter of minutes. The unobtrusive nature of this device means you can covertly record data without drivers knowing and altering their driving habits. The lack of a need for loops, wires, or road tubes also means that you have... **no recurring supply costs.**

While tubes will continue to have their place in the traffic counting world, they do have a few drawbacks. With the Black Cat II Plus, you will not have to bother with any kind of sensors in the road, such as loops or tubes. This reduces the danger of being out in the road with moving traffic and will increase the safety of personnel.



• Covert Recording Provides Unbiased Data

One of the advantages of the Black Cat II Plus Radar is that it is all but invisible to drivers. Since there are no road tubes in the road, and no other obvious signs that data is being collected, you get unbiased data without drivers changing their driving habits.

Black Cat II Plus Radar covertly collecting vehicle data with drivers unaware

• Small Size and Light Weight Design

The Black Cat II Plus Radar uses a compact design to provide a footprint of less than 12 inches in length. The use of a long run lithium battery allows you to collect more than a week's worth of data while still keeping the unit light weight and easy to handle.



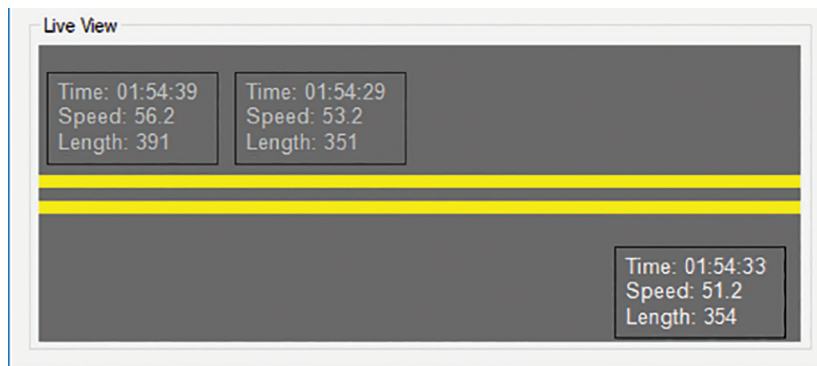
• Detects Two Lanes of Traffic In Same Direction

The new Black Cat II Plus Radar Recorder has the ability to detect the specific lane a vehicle is travelling in. This allows the Black Cat II Plus to record not only two lanes of bidirectional traffic, but two lanes of traffic travelling in the same direction. This expands the applications where the Black Cat II Plus can be used in place of road tubes or other in-road sensors to now include multi-lane highways.

For example, if you have a divided four lane highway (two lanes in each direction), Black Cat II Plus units can be positioned on each side of the highway and allow you to collect all four lanes of data.

• Easy Data Interface & Retrieval

At any point while data is being collected, you can connect to a laptop (either directly or with Bluetooth wireless) and monitor the recording of vehicles in real time using the STARnext software. STARnext can also be used to retrieve and process your data once you have completed your data collection. This software allows you to create your own report formats and produce color graphs in 2 or 3 dimensions. Finished reports can also be saved in PDF or Excel format for easy electronic

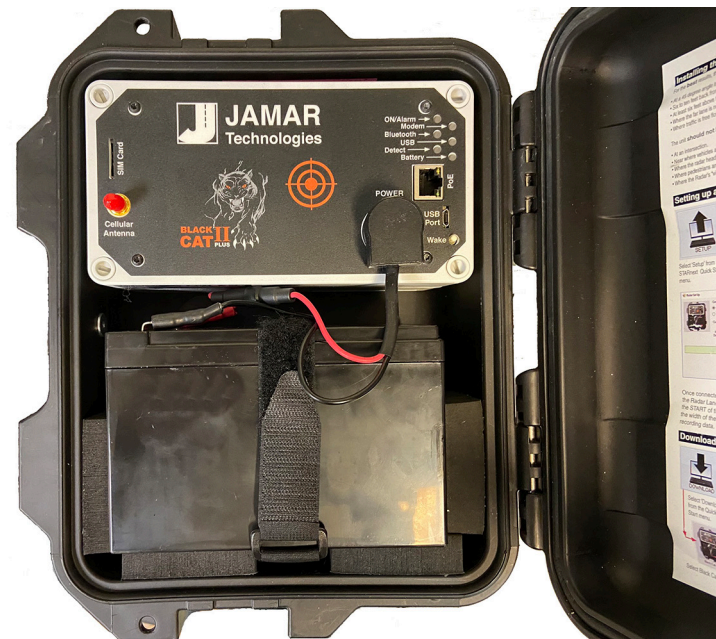
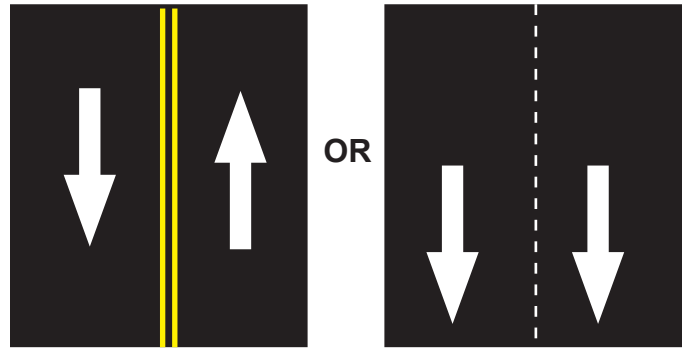


• No Subscription Fees, Unmatched Technical Support and Service

There are no recurring fees associated with this equipment. The invoice you pay to purchase the equipment is the only invoice you will receive from us.

Top-notch technical support and service are another great feature you get when buying a JAMAR product like the Black Cat II Plus. All technical support is free. You do not need a maintenance or service agreement in order to get technical support for either the Black Cat II Plus or the STARnext software.

Support can be found in a number of areas, and is as close as your nearest phone or computer. Our toll free 800 number can be used for direct support inquiries and we also provide the most extensive on-line support resources in the industry at www.jamartech.com. JAMAR User's Manuals also contain detailed instructions and tutorials on how to use your product.

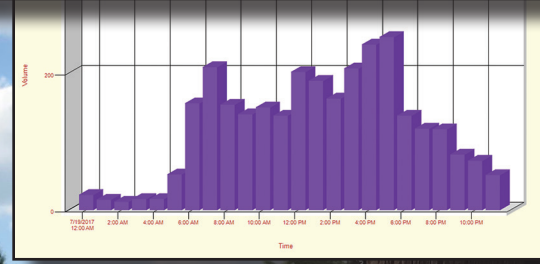
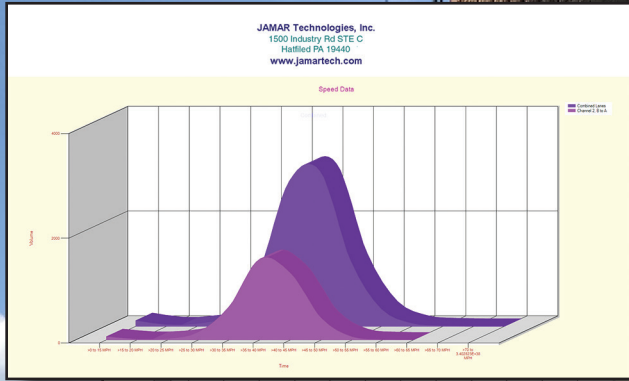


Specifications

- Configuration:** 2 Lanes, bi- or same direction
- Memory Size:** 2GB (approx. 200,000,000 vehicles)
- Data Storage:** Up to 256 Data Files
- Speed Range:** 7 – 130mph
- Radar Range:** 100 Feet
- Operating Temp:** -40F (-40C) to +158F (+70C)
- Count Accuracy:** (98%, ignoring obscuration)
- Speed Accuracy:** +/- 2% at 95% confidence
- Length Accuracy:** +/- 16 Inches or +/- 5% which ever is the greater at a 95% confidence
- Software:** STARnext
- Remote Access:** Optional Modem
- Wireless Access:** Bluetooth Low Energy
- Battery:** 12 Volt
- Battery Charge Life:** 7-10 Days
- Power Option:** Optional Solar Panel
- Power Option:** Power over Ethernet (PoE) Port
- Weight:** 12 lbs.
- Approval:** CE and FCC Approved

Start Time	16-F4-18 Ft	EB	WB	Combined Total
12:00 AM		125	174	299
01:00		86	106	192
02:00		52	71	123
03:00		20	30	50
04:00		32	27	59
05:00		65	73	138
06:00		121	114	235
07:00		191	172	363
08:00		293	295	548
09:00		366	391	757
10:00		438	519	957
11:00		434	502	936
12:00 PM		387	570	957
01:00		389	575	974
02:00		369	525	914
03:00		424	554	978
04:00		383	534	917
05:00		347	512	859
06:00		396	511	907
07:00		344	429	773
08:00		272	373	645
09:00		258	292	550
10:00		159	347	506
11:00		146	252	398
Total		6097	7988	14085
Percent		43.3%	56.7%	

Week Average	EB	WB	Total
09:00	90	124	214
10:00	79	86	165
11:00	43	49	92
12:00	21	26	47
01:00	35	29	64
02:00	16	16	32
03:00	186	206	392
04:00	384	336	720
05:00	377	329	706
06:00	371	411	782
07:00	308	417	725
08:00	332	300	632
09:00	465	504	969
10:00	437	566	1003
11:00	419	544	963
12:00	463	596	1059
01:00	442	605	1047
02:00	384	514	898
03:00	424	524	948
04:00	344	512	856
05:00	283	382	665
06:00	296	316	612
07:00	265	283	548
08:00	152	317	469
09:00	677	853	1530
10:00	726	917	1643
11:00	764	904	1668
12:00	511	734	1245
Total	6097	7988	14085
Peak	10:00	10:00	10:00
Volume	952	776	1728
ADT	5862	16837	22699
AADT	15528	15528	15528



Comprehensive Reports & Graphs

When you are done viewing your data, the STARnext software can be used to create comprehensive reports and graphs that show detailed breakdowns of traffic data.

You can make a variety of volume data reports, including such details as hourly totals with peak information, and a number of speed data reports, with various percentiles are other types of statistics. Finished reports can be directly printed or saved in an Adobe PDF format.

JAMAR Technologies, Inc.
1500 Industry Road, Suite C
Hatfield, PA 19440

SPEED DATA ANALYSIS

Location

Latitude: 40.262480
Longitude: -75.287132

Analysis Time Period

Start: 9/21/2018 2:02 PM
End: 10/5/2018 12:58 PM

Volume Analyzed

35,652

SPEED LIMIT

35

Excessive Violations

19%

Average Speed

40

High Time of Violations

9/26/2018 5:02 PM

High Percentage Speed

46

MEDIUM

High Percentage Speed

55



JAMAR
Technologies, Inc.

sales@jamartech.com • www.jamartech.com
1-800-776-0940 • 1-215-361-2244
1500 Industry Road, Suite C
Hatfield, PA, USA 19440
1.2 June 2023